

Stainless steel minicylinders Series 94 and 95

Single-acting and double-acting
 Standard CETOP RP52-P DIN/ISO 6432
 Series 94 (ø 16, 20, 25): magnetic
 Series 95 (ø 25): magnetic, cushioned

- » ISO/DIN 6432
- » Stainless steel



The cylinders Series 94 and 95 are suitable for use in harsh environmental conditions as in the off-shore, naval, pharmaceutical, nuclear and food industries. Their construction enables the replacement of all seals.

GENERAL DATA

Type of construction	end blocks secured to the tube
Operation	single-acting and double-acting
Materials	end blocks and rod = stainless steel AISI 316, seals = NBR Series 94: tube in stainless steel AISI 304 Series 95: tube in stainless steel AISI 316
Type of mounting	screw - flange - feet - swivel combination
Strokes min - max	10 ÷ 500 mm
Operating temperature	0° - 80°C (with dry air -20°C)
Special designs	for applications in damp, dusty or aggressive environments
Operating pressure	1 ÷ 10 bar
Speed	10 ÷ 1000 mm/sec (without load)
Fluid	clean air, without lubrication * If lubricated air is used, it is recommended to use oil ISOVG32. Once applied the lubrication should never be interrupted.

STANDARD STROKES FOR MINICYLINDERS SERIES 94 AND 95

- = single-acting
- × = double-acting

∅	10	25	40	50	80	100	125	160	200	250	300	320	400	500
94 16	•×	•×	•×	•×	×	×	×	×	×					
94 20	•×	•×	•×	•×	×	×	×	×	×	×	×			
94 25	•×	•×	•×	•×	×	×	×	×	×	×	×	×	×	×
95 25	×	×	×	×	×	×	×	×	×	×	×	×	×	×

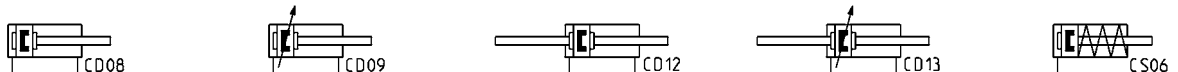
CODING EXAMPLE

94	N	2	A	16	A	100	
-----------	----------	----------	----------	-----------	----------	------------	--

94	SERIES 94 = magnetic 95 = magnetic, cushioned	
N	VERSION N = standard	
2	OPERATION 1 = single-acting, front spring 2 = double-acting 3 = double-acting, through-rod	PNEUMATIC SYMBOLS CS06 (S. 94) CD08 (S. 94) - CD09 (S. 95) CD12 (S. 94) - CD13 (S. 95)
A	MATERIALS A = stainless steel, seals in NBR V = stainless steel, all seals in FKM	
16	BORE 16 = 16 mm - 20 = 20 mm - 25 = 25 mm	
A	TYPE OF DESIGN A = standard (locking ring for end cap V + lock nut for rod U)	
100	STROKE (see the table)	
	= standard V = rod seals in FKM	

PNEUMATIC SYMBOLS

The pneumatic symbols which have been indicated in the CODING EXAMPLE are shown below.



ACCESSORIES FOR STAINLESS STEEL MINICYLINDERS SERIES 94 AND 95
1

MOVEMENT



Foot mount Mod. B



Flange bracket Mod. E



Trunnion bracket Mod. I



Rod fork end Mod. G-94/90



Swivel ball joint Mod. GA-94/90



Piston rod lock nut Mod. U-94/90

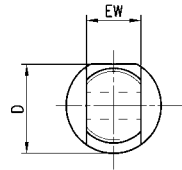


Nose nut Mod. V-94 and Mod. U-90

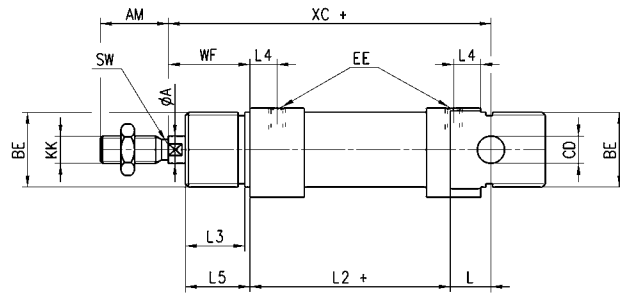


All accessories are supplied separately, except for piston rod lock nut Mod. U

Cylinders Series 94 and 95



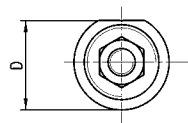
+ = add the stroke



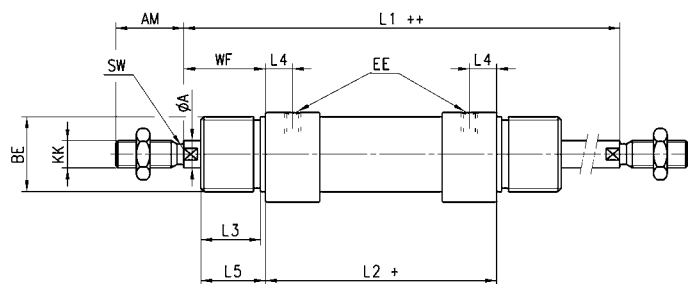
DIMENSIONS

Mod.	∅	A	AM	BE	CD	D	EE	EW	KK	L	L2	L3	L4	L5	SW	WF	XC
94	16	6	16	M16x1,5	6	21,2	M5	12	M6	9	56	14	5,5	15	5	22	82
94	20	8	20	M22x1,5	8	26,2	G1/8	16	M8	12	68	17,5	8	19	7	24	95
94-95	25	10	22	M22x1,5	8	32,5	G1/8	16	M10x1,25	12	69	18,5	7,5	20	8	28	104

Cylinders Series 94 and 95 - through-rod



+ = add the stroke
++ = add the stroke two times

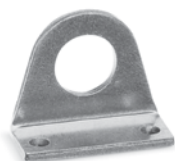


DIMENSIONS

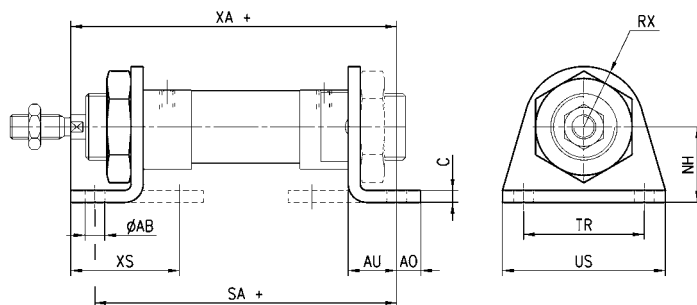
Mod.	∅	A	AM	BE	D	EE	KK	L1	L2	L3	L4	L5	SW	WF
94	16	6	16	M16x1,5	21,2	M5	M6	100	56	14	5,5	15	5	22
94	20	8	20	M22x1,5	26,2	G1/8	M8	116	68	17,5	8	19	7	24
94-95	25	10	22	M22x1,5	32,5	G1/8	M10x1,25	125	69	18,5	7,5	20	8	28

Foot mount Mod. B

Material: stainless steel 304

 Supplied with:
 2x feet
 1x nut


+ = add the stroke


DIMENSIONS

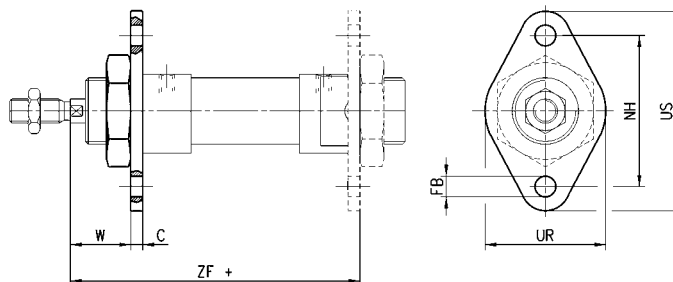
Mod.	Ø	AB	AO	AU	C	NH	RX	SA	TR	US	XA	XS
B-94-12-16	16	5,5	6	13	3	20	13	82	32	42	91	32
B-94-20-25	20	6,6	8	16	4	25	20	100	40	54	108	36
B-94-20-25	25	6,6	8	16	4	25	20	101	40	54	113	40

Flange bracket Mod. E

Material: stainless steel 304

 Supplied with:
 1x flange

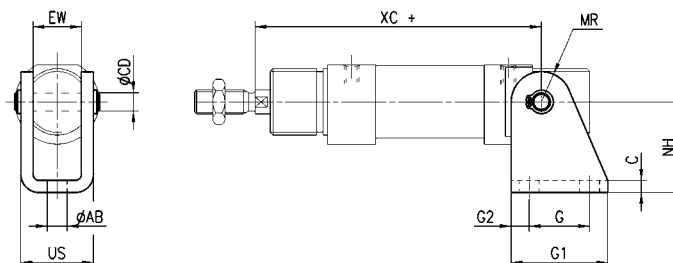

+ = add the stroke


DIMENSIONS

Mod.	Ø	C	FB	TF	UF	UR	W	ZF
E-94-12-16	16	3	5,5	40	53	30	19	81
E-94-20-25	20	4	6,6	50	66	40	20	96
E-94-20-25	25	4	6,6	50	66	40	24	101

Trunnion Bracket Mod. I

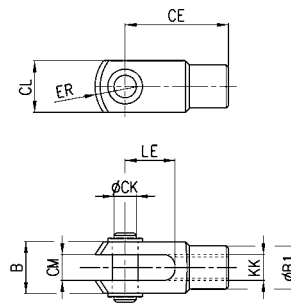
Material: stainless steel 304


DIMENSIONS

Mod.	Ø	AB	C	CD	EW	G	G1	G2	MR	NH	US	XC+
I-94-12-16	16	5,5	3	6	12	15	25	5	7	27	18,1	82
I-94-20-25	20	6,6	4	8	16	20	32	6	10	30	24,1	95
I-94-20-25	25	6,6	4	8	16	20	32	6	10	30	24,1	104

Rod Fork End Mod. G-94/90

Material: stainless steel 303
ISO 8140

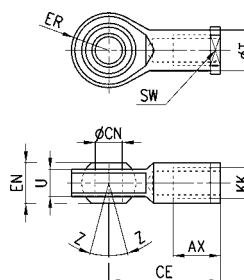


DIMENSIONS

Mod.	CK	LE	KK	CM	ER	CE	CL	B	B1
G-94-12-16	6	12	M6x1	6	7	24	12	16	10
G-94-20	8	16	M8x1,25	8	10	32	16	22	14
G-90-25-32	10	20	M10x1,25	10	12	40	20	26	18

Swivel Ball Joint Mod. GA-94/90

Material: stainless steel 304
ISO 8139

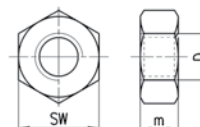


DIMENSIONS

Mod.	CN	U	EN	ER	AX	CE	KK	T	Z	SW
GA-94-12-16	6	7	9	10	12	30	M6x1	10	6,5	11
GA-94-20	8	9	12	12	16	36	M8x1,25	12,5	6,5	14
GA-90-32	10	10,5	14	14	20	43	M10x1,25	15	6,5	17

Piston Rod Lock Nut Mod. U-94/90

ISO 4035
Material: stainless steel 304

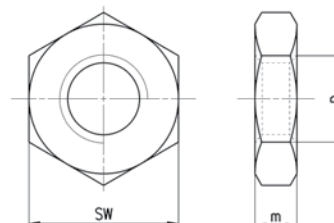


DIMENSIONS

Mod.	D	m	SW
U-94-12-16	M6x1	4	10
U-94-20	M8x1,25	5	13
U-90-25-32	M10x1,25	6	17

Nose Nut Mod. V-94 and Mod. U-90

ISO 4035
Material: stainless steel 304



DIMENSIONS

Mod.	ϕ	D	m	SW
U-90-50-63	12-16	M16x1,5	8	24
V-94-20-25	20-25	M22x1,5	10	32